

Measurement Sheet Information for RWC's Aero Cover Series

For most dual wheel applications these measurements aren't necessary for the depth of the hardware.
On standard tractors and trailers confirm this information:

Drive Axle Stud size:

Trailer Axle Cap Bolt Spread:

Will be 5/8" (15/16 socket) or 3/4" (1 1/8" socket)

Will be either 5.5" or 6.75" (see image)



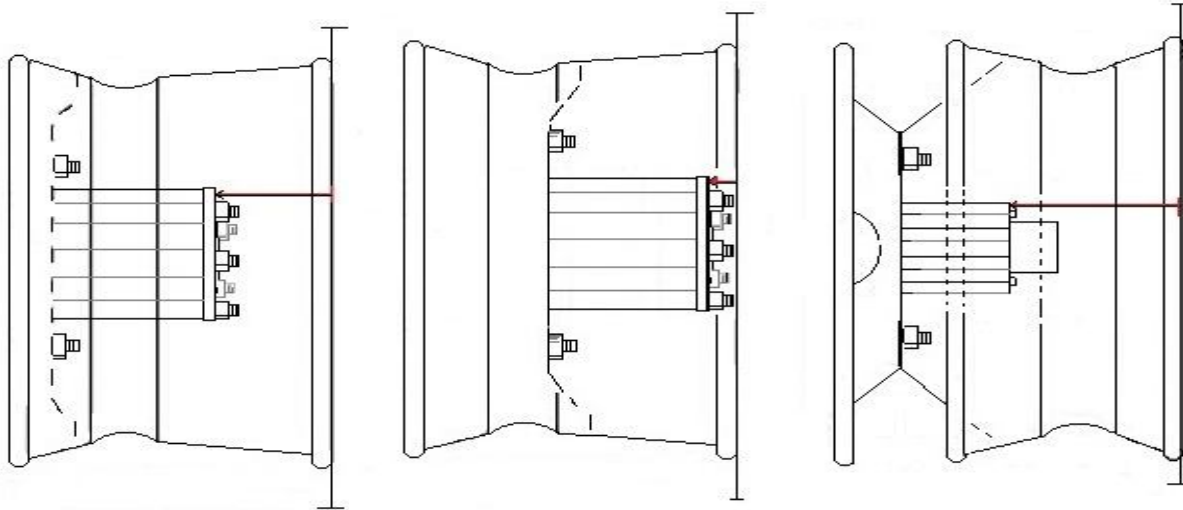
For newer configurations with factory Wide Base Single wheels installed, or retrofitted applications from duals.

For the Drive Axle's there will be two configurations typically prevalent, 2" offset or so.. and the newer 0" (zero) offset.

On Zero Offset configurations, if your studs stick out past the straight edge, confirm by how much.

You will need to confirm one of these two measurements for drive axles:

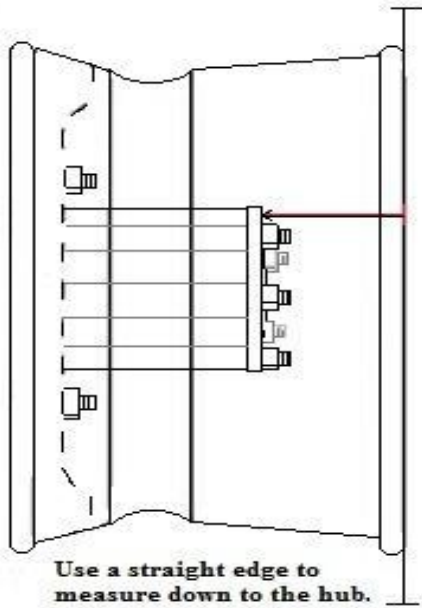
Trailer axles for wide base, see below



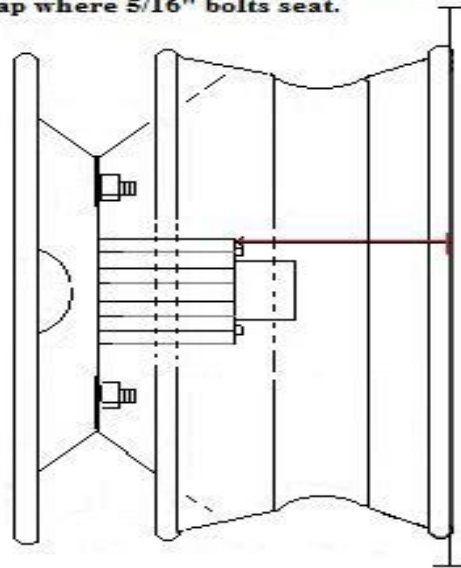
Any uncertainties or questions, feel free to take a photo of your configuration and email it to us. Ask your sales associate for their email and we will answer your questions or concerns promptly!



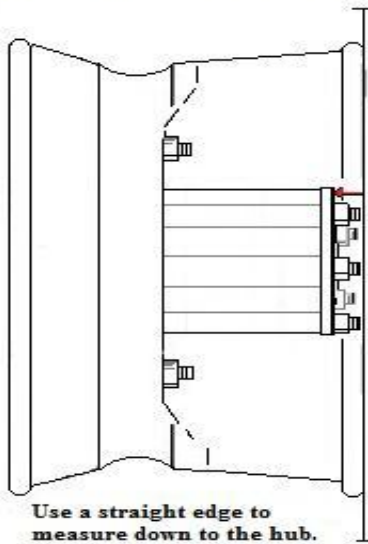
**Dual Wheels or Wide Base Single Drive
Axle measurement for fixed & adjustable
brackets.**



**Trailer Axle measurement,
from straight edge to base of oil
cap where 5/16" bolts seat.**



**Wide Base Single with Zero Offsets:
measure from the axle cap to the straight
edge. If studs stick out past straight edge,**



Fax Information to: 847-662-7744

**For certain Zero Offset configurations, the axle studs will protrude beyond the lip of the rim, confirm by how much?